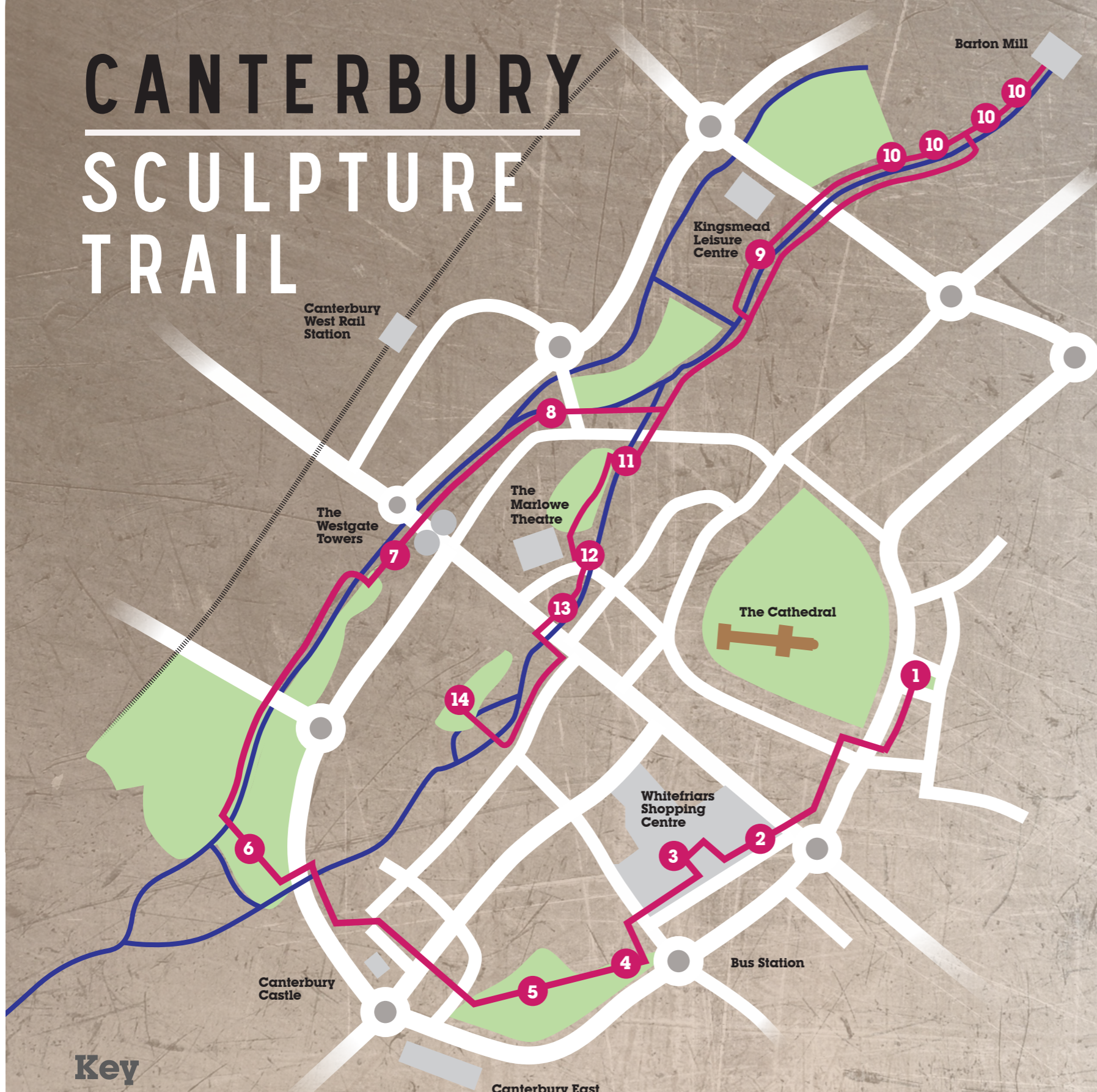


# CANTERBURY SCULPTURE TRAIL



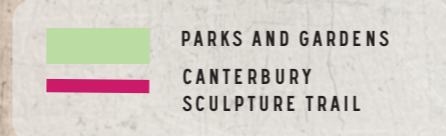
## Key

**Total distance:** 3.2 miles

**Total time to walk:** Approx: 1 hour 30 minutes

**Difficulty level:** Surfaced paths, mostly flat with some gentle gradients. Some paths are shared with cyclists.

Canterbury East Rail Station



visit [canterbury.co.uk/canterburysculpturetrail](http://canterbury.co.uk/canterburysculpturetrail)



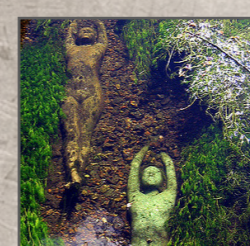
**1 Ethelbert and Bertha**  
by Stephen Melton, 2006,  
Lady Wootton's Green  
Bronze



**2 Lamb** by Kenny Hunter, 2005,  
Whitefriars shopping centre  
Bronze



**3 The Pits** by Janet Hodgson, 2005,  
Whitefriars shopping centre  
York stone



**4 Silent Table** by Joss Smith, 1999,  
Dane John Park  
Portland stone



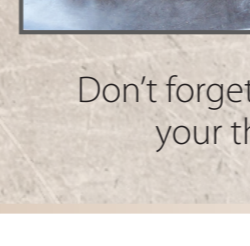
**5 Font** by Joss Smith, 1999,  
Dane John Park  
Portland stone



**6 Bull** Stephen Portchmouth, 2016,  
Tannery Field, Westgate Parks  
Railway track



**7 Alluvia** by Jason de Caires Taylor, 2008,  
bed of the river Great Stour, visible from  
the bridge by the Westgate Towers  
Concrete and glass resin



**8 Millers Seat**, by Tim Norris, 2015,  
Millers Field, The Causeway  
Sweet chestnut and flint



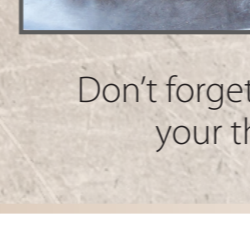
**9 Stainless Steel XXV**,  
by Richard Jones, 1977, Kingsmead  
Riverside opposite Sainsburys  
Stainless steel



**10 Four Sculptural Sitting Decks**  
by Angus Ross, 2011,  
Kingsbrook Park, Riverside  
Steam bent oak



**11 Abbots Seat** by Andrew  
Laphorn, 2015, Millers Arms Sluice  
Sweet chestnut



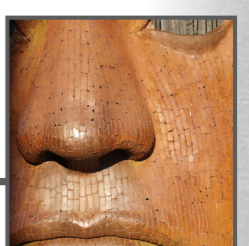
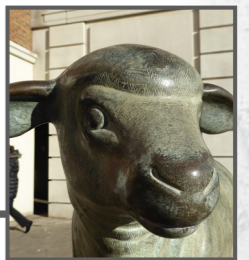
**12 Bulkhead** by Rick Kirby 2011  
Marlowe Theatre, riverside  
Mild Steel



**13 Chaucer in Canterbury**  
by Samantha Holland and Lynne  
O'Dowd, 2016, Junction of Best Lane  
and High Street - Bronze



**14 Greyfriars Seat** by Alun Heslop,  
2016, Greyfriars Garden  
Cast concrete and oak



Don't forget to tweet as you go along the trail and share photos and your thoughts with us using [#canterburysculpturetrail](https://twitter.com/canterburysculpturetrail)